



U.S. Army Space
and Missile Defense
Command

Technical Center

U.S. Army Space and Missile Defense Command Technical Center – Next Generation Space and Missile Defense

August 2021

Dr. Michael W. Zmuda

Director, Research and Technology





SMDC Technical Center

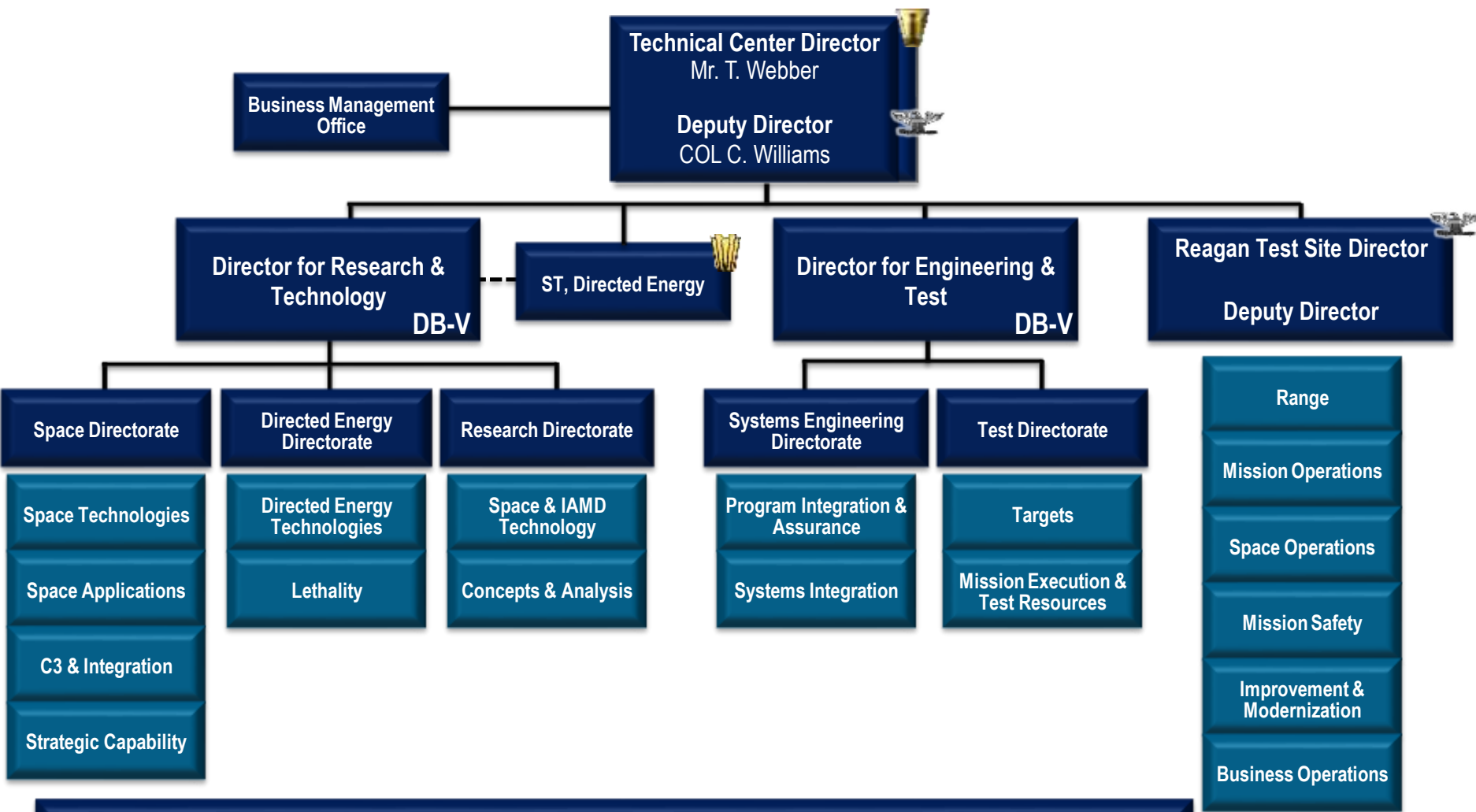
Technical Center 2028 Thematic Goal: *Recognized by our peers and customers as the premiere Science, Technology, and Reinvention Laboratory (STRL) for Space, Directed Energy, Hypersonics, and Test & Evaluation by 2028*

Research & Technology Directorate Vision in support of above goal: *Recognized by Army, Peer, and Customer Organizations as the Premiere and Trusted Army Agents for the Research, Development and Technology Maturation of Directed Energy (HPM and HEL), Hypersonics, High Altitude & Space based capabilities, and Integrated Space, Air and Missile Defense systems, as well as technologies to defeat our adversaries' use of these technologies against the US and our Allies*





Technical Center



One team of professionals providing technological capabilities to support joint warfighting readiness in MDO.





Future Operational Environment Considerations

- Think 4D (3D and Time)
- Multi-Domain Operations
- Multi-Spectral Operations
- Secure, Integrated Operations
- Multiple/Integrated Effectors (many arrows in the quiver)
- Cause Enemy to Expend More \$ for same Target

**Amateurs Think Tactics & Technology (ATT)
Professionals Think Logistics & Operations (PLO)**





Next Generation Space and Missile Defense

Potential Growth Areas Looking at the Future SMD Environment

- **HEL and HPM**
 - Expanding to transportable and airborne platform research considerations
 - Additional Target Sets – For HEL and HPM Lethality, Vulnerability and Survivability Research
 - Multispectral Applications
 - Near and long range targets
- **Hypersonics – Both Offensive and Defensive**
- **Integrated Space, Air, and Missile Defense (ISAMD)**
 - Synergistic and symbiotic integration of weapon systems and capabilities
 - Looking at mixes of systems (HEL/HPM/KE/EW/Cyber)
 - Joint All Domain Operations, SOS, and interfaces of systems
 - Comprehensive integrated effectors - from small to larger threats
 - Faster transitioned capabilities within a fiscally constrained environment
- **COUNTER: Research to Counter Potential Enemy Capabilities**
 - DEWs (HEL and HPM – All Army related domains and platforms)
 - Hypersonics
 - High Altitude/Space based applications
 - ISAMD
 - EWs





Questions?

